

# Cologne

**- 54.5%**      **+ 100.0%**      **+ 5.7%**

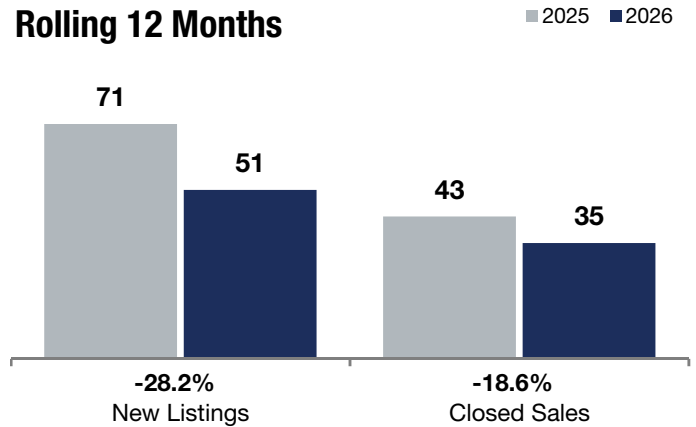
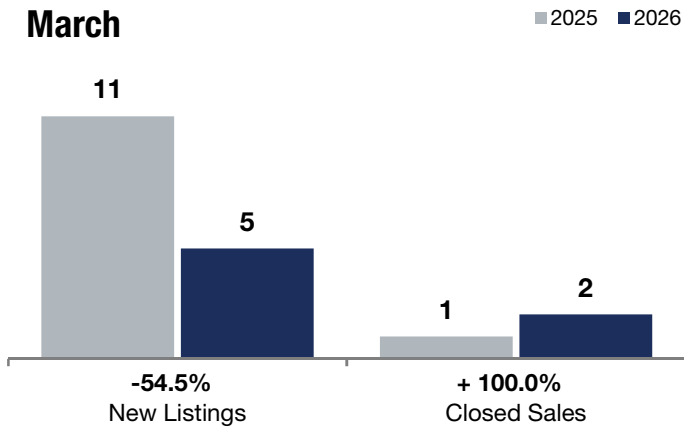
Change in  
New Listings

Change in  
Closed Sales

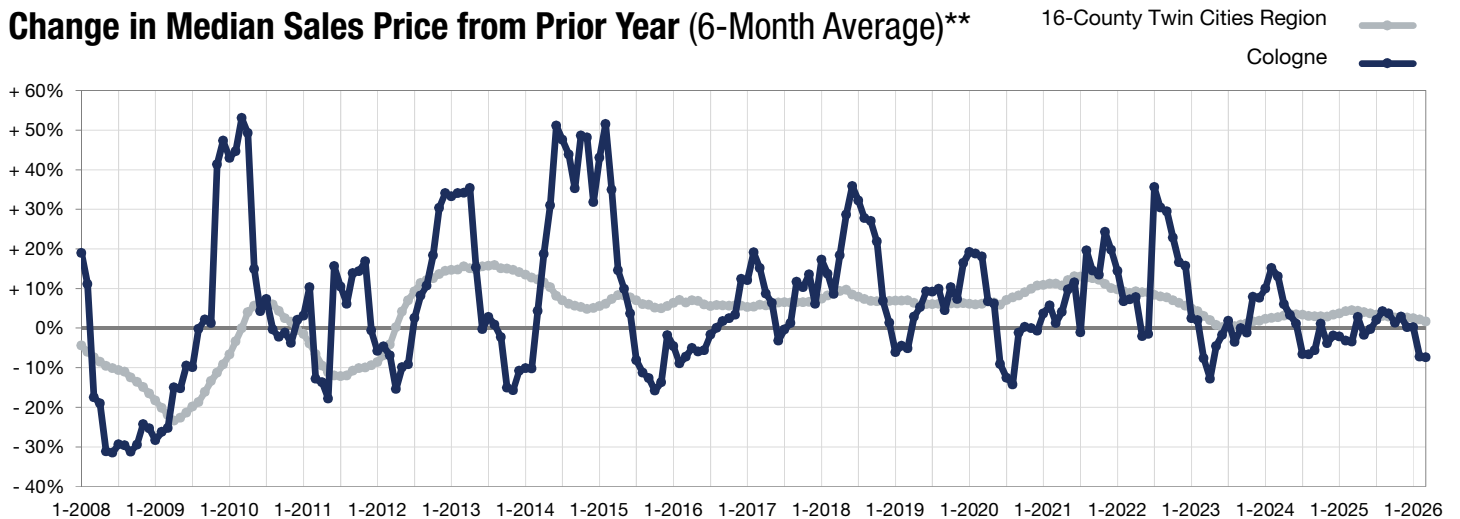
Change in  
Median Sales Price

	March			Rolling 12 Months		
	2025	2026	+ / -	2025	2026	+ / -
New Listings	11	5	-54.5%	71	51	-28.2%
Closed Sales	1	2	+ 100.0%	43	35	-18.6%
Median Sales Price*	\$404,865	<b>\$427,838</b>	+ 5.7%	\$402,500	<b>\$409,900</b>	+ 1.8%
Average Sales Price*	\$404,865	<b>\$427,838</b>	+ 5.7%	\$399,298	<b>\$407,471</b>	+ 2.0%
Price Per Square Foot*	\$306	<b>\$310</b>	+ 1.3%	\$227	<b>\$221</b>	-2.3%
Percent of Original List Price Received*	102.1%	<b>100.0%</b>	-2.1%	100.2%	<b>98.7%</b>	-1.5%
Days on Market Until Sale	501	<b>0</b>	-100.0%	98	<b>88</b>	-10.2%
Inventory of Homes for Sale	29	<b>18</b>	-37.9%	--	--	--
Months Supply of Inventory	8.4	<b>5.5</b>	-34.5%	--	--	--

\* Does not account for seller concessions. | Activity for one month can sometimes look extreme due to small sample size.



## Change in Median Sales Price from Prior Year (6-Month Average)\*\*



\*\* Each dot represents the change in median sales price from the prior year using a 6-month weighted average. This means that each of the 6 months used in a dot are proportioned according to their share of sales during that period.