

+ 100.0% **0.0%** **- 52.0%**

Change in
New Listings

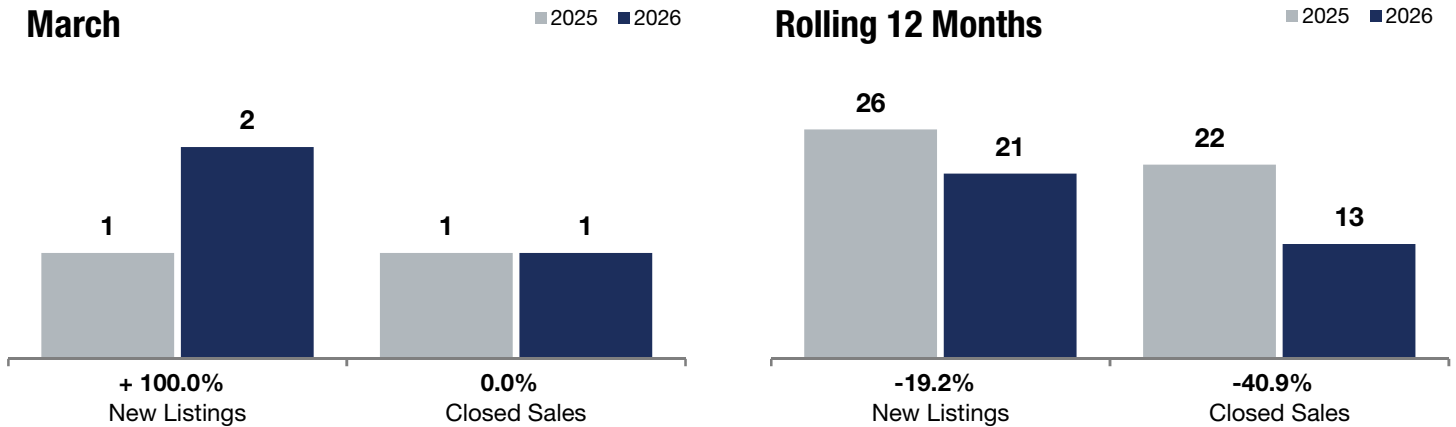
Change in
Closed Sales

Change in
Median Sales Price

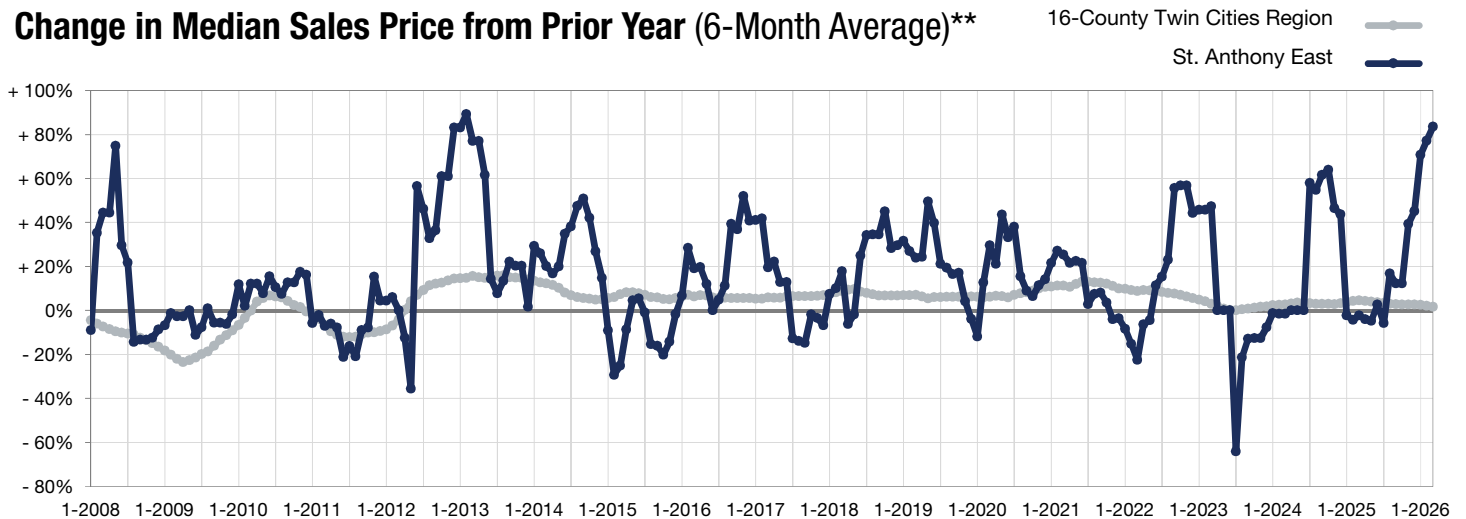
St. Anthony East

	March			Rolling 12 Months		
	2025	2026	+ / -	2025	2026	+ / -
New Listings	1	2	+ 100.0%	26	21	-19.2%
Closed Sales	1	1	0.0%	22	13	-40.9%
Median Sales Price*	\$391,279	\$188,000	-52.0%	\$364,950	\$400,000	+ 9.6%
Average Sales Price*	\$391,279	\$188,000	-52.0%	\$344,272	\$388,288	+ 12.8%
Price Per Square Foot*	\$248	\$191	-23.1%	\$226	\$250	+ 10.7%
Percent of Original List Price Received*	97.8%	96.4%	-1.4%	98.1%	97.6%	-0.5%
Days on Market Until Sale	7	126	+ 1,700.0%	46	39	-15.2%
Inventory of Homes for Sale	3	4	+ 33.3%	--	--	--
Months Supply of Inventory	1.4	2.8	+ 100.0%	--	--	--

* Does not account for seller concessions. | Activity for one month can sometimes look extreme due to small sample size.



Change in Median Sales Price from Prior Year (6-Month Average)**



** Each dot represents the change in median sales price from the prior year using a 6-month weighted average. This means that each of the 6 months used in a dot are proportioned according to their share of sales during that period.