

# Minneapolis – Calhoun-Isle

**+ 16.7%**

**- 19.0%**

**- 1.7%**

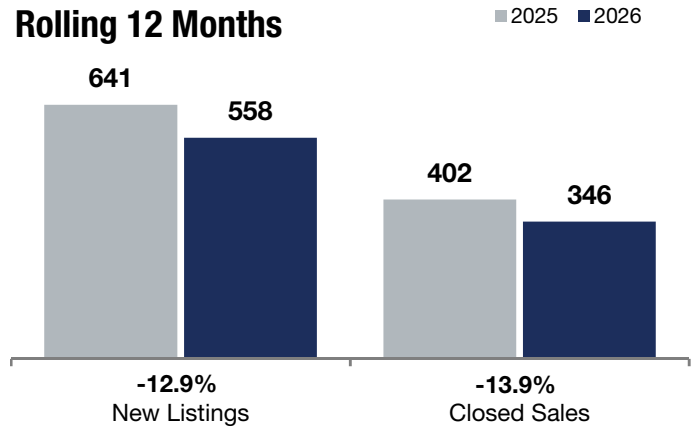
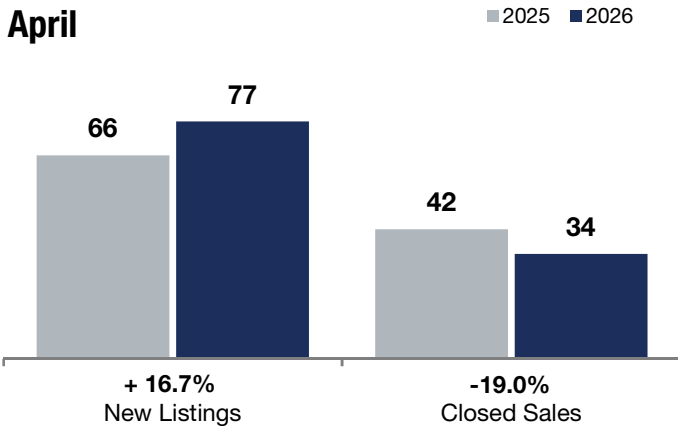
Change in  
 New Listings

Change in  
 Closed Sales

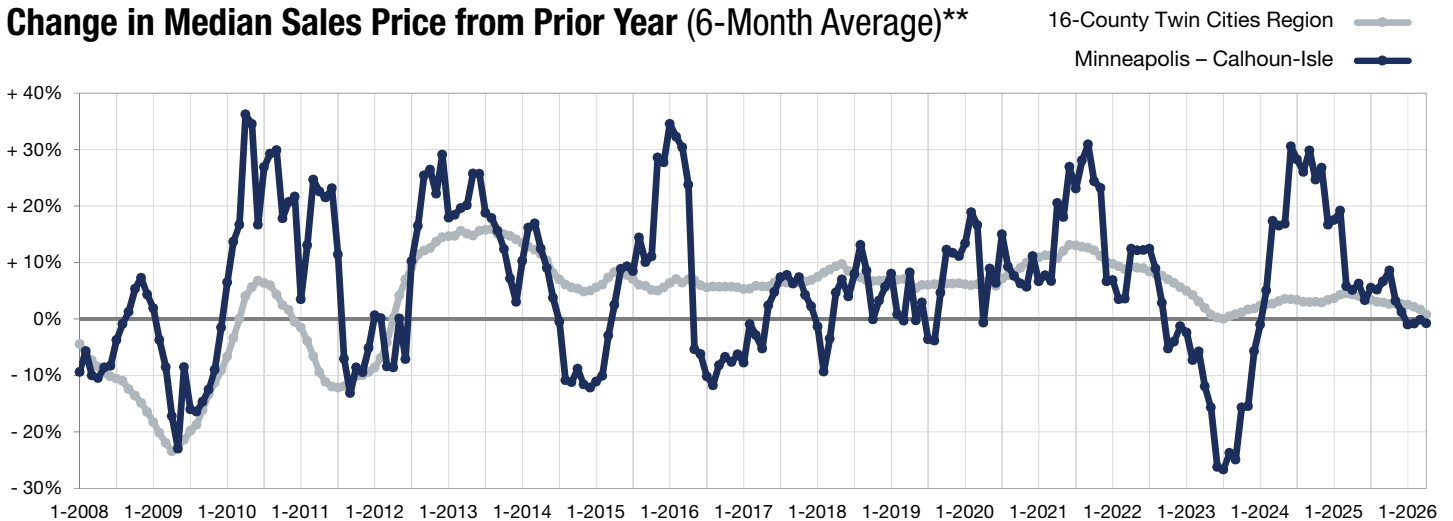
Change in  
 Median Sales Price

	April			Rolling 12 Months		
	2025	2026	+ / -	2025	2026	+ / -
New Listings	66	77	+ 16.7%	641	558	-12.9%
Closed Sales	42	34	-19.0%	402	346	-13.9%
Median Sales Price*	\$452,500	<b>\$445,000</b>	-1.7%	\$444,500	<b>\$495,000</b>	+ 11.4%
Average Sales Price*	\$684,990	<b>\$809,292</b>	+ 18.1%	\$651,786	<b>\$624,893</b>	-4.1%
Price Per Square Foot*	\$282	<b>\$297</b>	+ 5.1%	\$272	<b>\$277</b>	+ 1.7%
Percent of Original List Price Received*	98.5%	<b>97.8%</b>	-0.7%	95.9%	<b>96.5%</b>	+ 0.6%
Days on Market Until Sale	116	<b>83</b>	-28.4%	96	<b>83</b>	-13.5%
Inventory of Homes for Sale	135	<b>132</b>	-2.2%	--	--	--
Months Supply of Inventory	4.0	<b>4.7</b>	+ 17.5%	--	--	--

\* Does not account for seller concessions. | Activity for one month can sometimes look extreme due to small sample size.



## Change in Median Sales Price from Prior Year (6-Month Average)\*\*



\*\* Each dot represents the change in median sales price from the prior year using a 6-month weighted average. This means that each of the 6 months used in a dot are proportioned according to their share of sales during that period.

## Neighborhoods of Minneapolis – Calhoun-Isle

### New Listings

	4-2025	4-2026	+ / -	Prior Year R12*	Current R12*	+ / -
Bryn Mawr	7	7	0.0%	64	66	+ 3.1%
Cedar-Isles-Dean	7	11	+ 57.1%	94	81	- 13.8%
East Bde Maka Ska	7	4	- 42.9%	52	42	- 19.2%
East Isles	8	13	+ 62.5%	72	79	+ 9.7%
Kenwood	2	6	+ 200.0%	38	44	+ 15.8%
Lowry Hill	11	14	+ 27.3%	118	98	- 16.9%
Lowry Hill East	11	8	- 27.3%	94	58	- 38.3%
South Uptown	7	12	+ 71.4%	79	61	- 22.8%
West Maka Ska	3	7	+ 133.3%	51	36	- 29.4%

### Closed Sales

	4-2025	4-2026	+ / -	Prior Year R12*	Current R12*	+ / -
Bryn Mawr	4	7	+ 75.0%	48	48	0.0%
Cedar-Isles-Dean	4	3	- 25.0%	64	48	- 25.0%
East Bde Maka Ska	5	2	- 60.0%	39	32	- 17.9%
East Isles	5	4	- 20.0%	45	45	0.0%
Kenwood	3	5	+ 66.7%	24	24	0.0%
Lowry Hill	9	7	- 22.2%	59	63	+ 6.8%
Lowry Hill East	5	0	- 100.0%	55	39	- 29.1%
South Uptown	7	2	- 71.4%	49	29	- 40.8%
West Maka Ska	4	2	- 50.0%	28	20	- 28.6%

### Median Sales Price

	4-2025	4-2026	+ / -	Prior Year R12*	Current R12*	+ / -
Bryn Mawr	\$532,500	\$610,000	+ 14.6%	\$537,500	\$517,500	- 3.7%
Cedar-Isles-Dean	\$380,000	\$430,000	+ 13.2%	\$544,500	\$575,000	+ 5.6%
East Bde Maka Ska	\$315,000	\$1,271,500	+ 303.7%	\$525,000	\$757,000	+ 44.2%
East Isles	\$2,161,749	\$307,500	- 85.8%	\$425,000	\$335,000	- 21.2%
Kenwood	\$1,626,000	\$1,162,000	- 28.5%	\$1,250,000	\$992,500	- 20.6%
Lowry Hill	\$420,000	\$340,000	- 19.0%	\$580,000	\$540,000	- 6.9%
Lowry Hill East	\$315,000	\$0	- 100.0%	\$250,000	\$375,000	+ 50.0%
South Uptown	\$505,000	\$482,500	- 4.5%	\$365,000	\$462,500	+ 26.7%
West Maka Ska	\$237,250	\$708,750	+ 198.7%	\$266,000	\$251,000	- 5.6%

### Days on Market Until Sale

	4-2025	4-2026	+ / -	Prior Year R12*	Current R12*	+ / -
Bryn Mawr	38	59	+ 55.3%	60	49	- 18.3%
Cedar-Isles-Dean	17	109	+ 541.2%	93	81	- 12.9%
East Bde Maka Ska	175	97	- 44.6%	132	65	- 50.8%
East Isles	207	73	- 64.7%	123	111	- 9.8%
Kenwood	85	177	+ 108.2%	126	86	- 31.7%
Lowry Hill	156	63	- 59.6%	127	90	- 29.1%
Lowry Hill East	180	0	- 100.0%	96	109	+ 13.5%
South Uptown	26	6	- 76.9%	49	80	+ 63.3%
West Maka Ska	134	168	+ 25.4%	156	129	- 17.3%

### Pct. Of Original Price Received

	4-2025	4-2026	+ / -	Prior Year R12*	Current R12*	+ / -
Bryn Mawr	103.3%	98.2%	- 4.9%	98.2%	97.2%	- 1.0%
Cedar-Isles-Dean	100.4%	90.3%	- 10.1%	94.3%	96.7%	+ 2.5%
East Bde Maka Ska	96.2%	96.8%	+ 0.6%	93.3%	99.2%	+ 6.3%
East Isles	90.1%	100.0%	+ 11.0%	94.7%	94.6%	- 0.1%
Kenwood	105.9%	93.4%	- 11.8%	98.2%	96.0%	- 2.2%
Lowry Hill	97.2%	97.9%	+ 0.7%	94.2%	95.0%	+ 0.8%
Lowry Hill East	96.5%	0.0%	- 100.0%	95.8%	95.5%	- 0.3%
South Uptown	101.9%	115.4%	+ 13.2%	99.1%	98.4%	- 0.7%
West Maka Ska	95.1%	78.6%	- 17.4%	94.9%	93.5%	- 1.5%

### Inventory

	4-2025	4-2026	+ / -
Bryn Mawr	7	6	- 14.3%
Cedar-Isles-Dean	20	23	+ 15.0%
East Bde Maka Ska	12	9	- 25.0%
East Isles	17	25	+ 47.1%
Kenwood	11	10	- 9.1%
Lowry Hill	29	24	- 17.2%
Lowry Hill East	25	12	- 52.0%
South Uptown	7	19	+ 171.4%
West Maka Ska	13	15	+ 15.4%

### Months Supply

	4-2025	4-2026	+ / -
Bryn Mawr	1.7	1.6	- 5.9%
Cedar-Isles-Dean	3.9	5.5	+ 41.0%
East Bde Maka Ska	4.0	2.6	- 35.0%
East Isles	4.1	6.8	+ 65.9%
Kenwood	5.2	3.8	- 26.9%
Lowry Hill	5.5	4.3	- 21.8%
Lowry Hill East	5.8	3.6	- 37.9%
South Uptown	1.3	7.7	+ 492.3%
West Maka Ska	5.1	9.0	+ 76.5%

\* R12 = Rolling 12 Months. This means 12 months of data, combining the report month's total and the 11 months prior.