

Hanover

+ 76.9%

- 25.0%

+ 29.0%

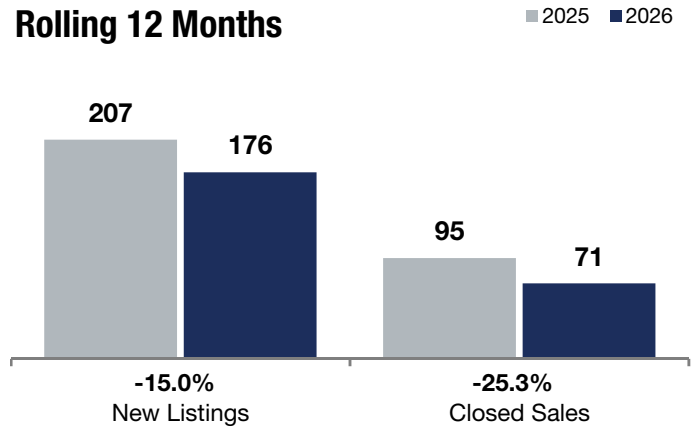
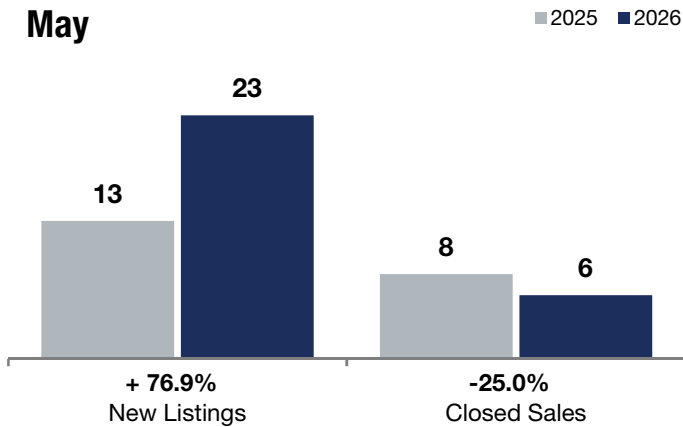
Change in
New Listings

Change in
Closed Sales

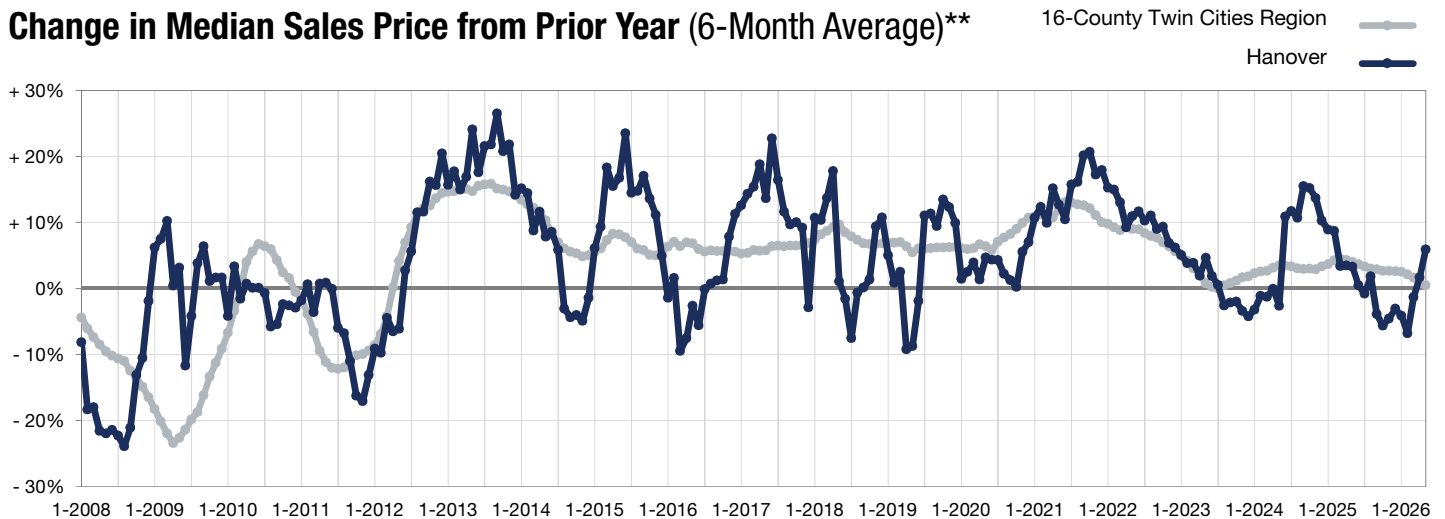
Change in
Median Sales Price

| | May | | | Rolling 12 Months | | |
|--|-----------|-----------|---------|-------------------|-----------|--------|
| | 2025 | 2026 | + / - | 2025 | 2026 | + / - |
| New Listings | 13 | 23 | + 76.9% | 207 | 176 | -15.0% |
| Closed Sales | 8 | 6 | -25.0% | 95 | 71 | -25.3% |
| Median Sales Price* | \$422,500 | \$544,993 | + 29.0% | \$449,000 | \$464,900 | + 3.5% |
| Average Sales Price* | \$420,838 | \$557,043 | + 32.4% | \$472,971 | \$503,697 | + 6.5% |
| Price Per Square Foot* | \$209 | \$250 | + 19.7% | \$209 | \$222 | + 6.3% |
| Percent of Original List Price Received* | 98.6% | 99.7% | + 1.1% | 98.9% | 98.1% | -0.8% |
| Days on Market Until Sale | 90 | 17 | -81.1% | 91 | 69 | -24.2% |
| Inventory of Homes for Sale | 38 | 40 | + 5.3% | -- | -- | -- |
| Months Supply of Inventory | 5.1 | 6.7 | + 31.4% | -- | -- | -- |

* Does not account for seller concessions. | Activity for one month can sometimes look extreme due to small sample size.



Change in Median Sales Price from Prior Year (6-Month Average)**



** Each dot represents the change in median sales price from the prior year using a 6-month weighted average. This means that each of the 6 months used in a dot are proportioned according to their share of sales during that period.