

Lowry Hill East

- 44.4%

- 50.0%

- 67.2%

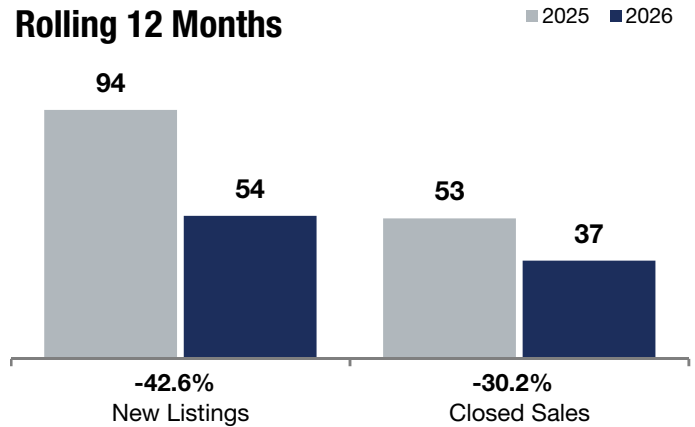
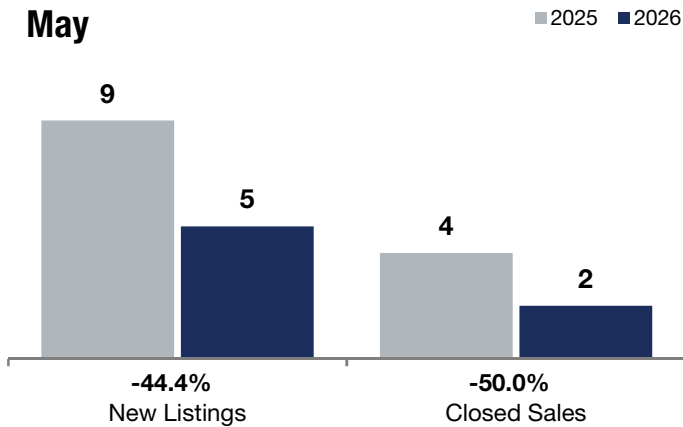
Change in
New Listings

Change in
Closed Sales

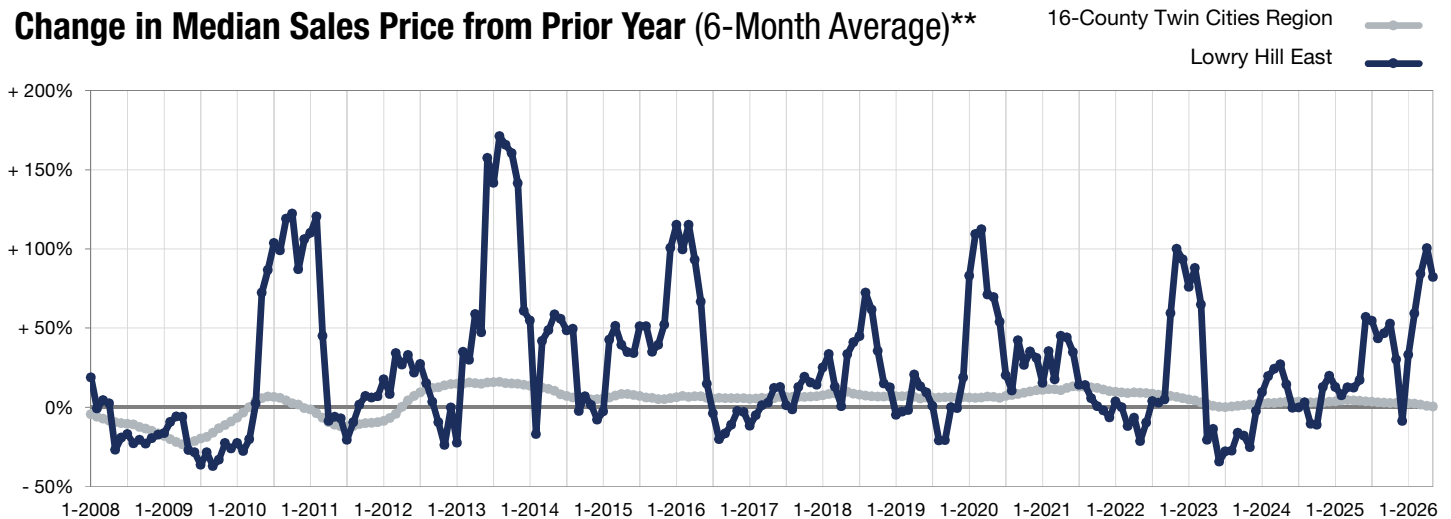
Change in
Median Sales Price

	May			Rolling 12 Months		
	2025	2026	+ / -	2025	2026	+ / -
New Listings	9	5	-44.4%	94	54	-42.6%
Closed Sales	4	2	-50.0%	53	37	-30.2%
Median Sales Price*	\$522,500	\$171,500	-67.2%	\$310,000	\$355,000	+ 14.5%
Average Sales Price*	\$541,250	\$171,500	-68.3%	\$319,075	\$350,305	+ 9.8%
Price Per Square Foot*	\$208	\$208	-0.0%	\$232	\$245	+ 5.7%
Percent of Original List Price Received*	94.1%	104.3%	+ 10.8%	95.6%	96.1%	+ 0.5%
Days on Market Until Sale	115	168	+ 46.1%	98	112	+ 14.3%
Inventory of Homes for Sale	24	13	-45.8%	--	--	--
Months Supply of Inventory	5.6	4.2	-25.0%	--	--	--

* Does not account for seller concessions. | Activity for one month can sometimes look extreme due to small sample size.



Change in Median Sales Price from Prior Year (6-Month Average)**



** Each dot represents the change in median sales price from the prior year using a 6-month weighted average. This means that each of the 6 months used in a dot are proportioned according to their share of sales during that period.