

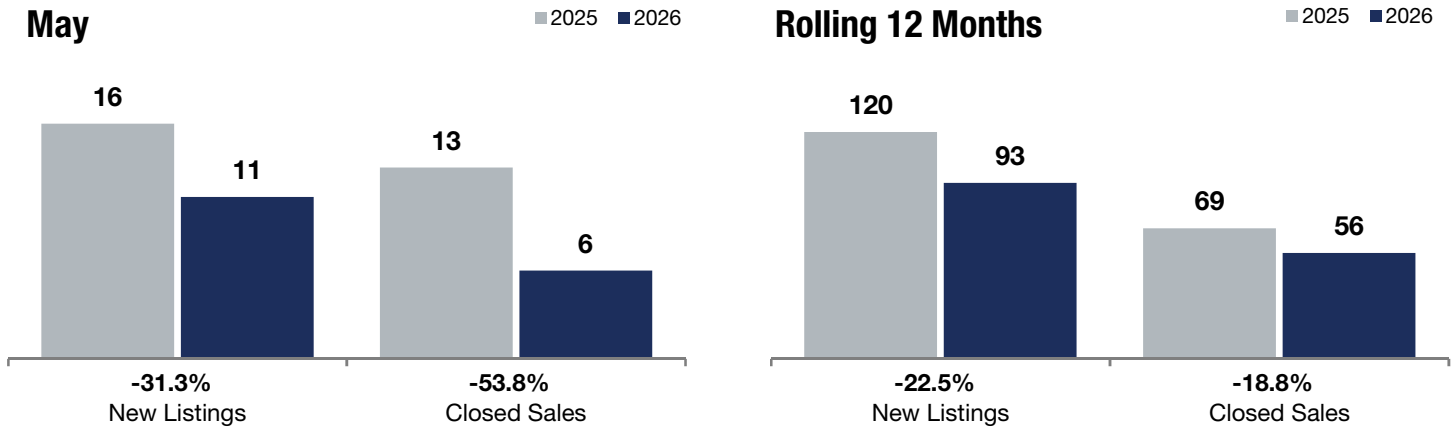
Lowry Hill

- 31.3% **- 53.8%** **+ 131.4%**

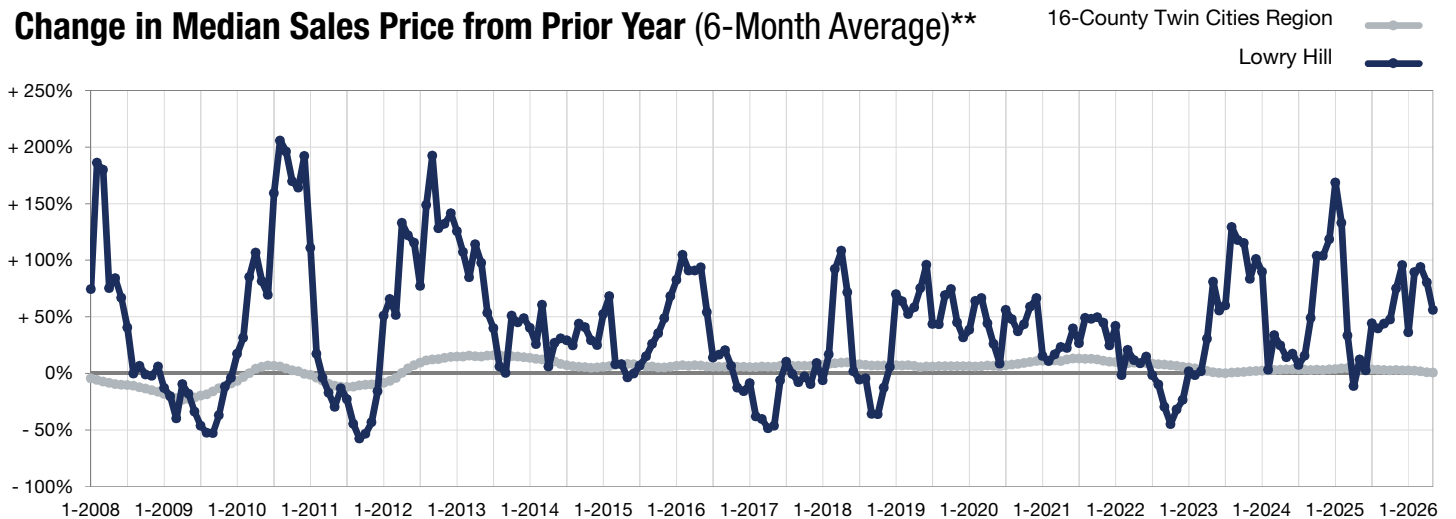
Change in New Listings Change in Closed Sales Change in Median Sales Price

	May			Rolling 12 Months		
	2025	2026	+ / -	2025	2026	+ / -
New Listings	16	11	-31.3%	120	93	-22.5%
Closed Sales	13	6	-53.8%	69	56	-18.8%
Median Sales Price*	\$540,000	\$1,249,450	+ 131.4%	\$587,000	\$569,375	-3.0%
Average Sales Price*	\$914,988	\$1,125,983	+ 23.1%	\$913,180	\$753,410	-17.5%
Price Per Square Foot*	\$297	\$281	-5.3%	\$292	\$264	-9.5%
Percent of Original List Price Received*	96.5%	93.5%	-3.1%	94.6%	94.5%	-0.1%
Days on Market Until Sale	121	61	-49.6%	128	80	-37.5%
Inventory of Homes for Sale	31	31	0.0%	--	--	--
Months Supply of Inventory	5.6	6.2	+ 10.7%	--	--	--

* Does not account for seller concessions. | Activity for one month can sometimes look extreme due to small sample size.



Change in Median Sales Price from Prior Year (6-Month Average)**



** Each dot represents the change in median sales price from the prior year using a 6-month weighted average. This means that each of the 6 months used in a dot are proportioned according to their share of sales during that period.