

+ 100.0% **+ 100.0%** **- 44.9%**

Change in
New Listings

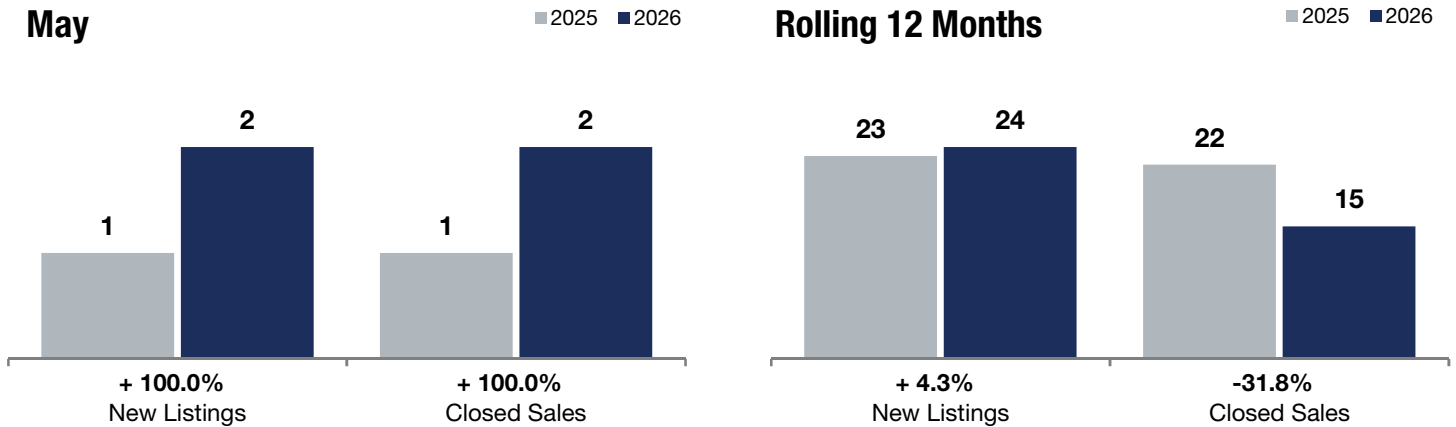
Change in
Closed Sales

Change in
Median Sales Price

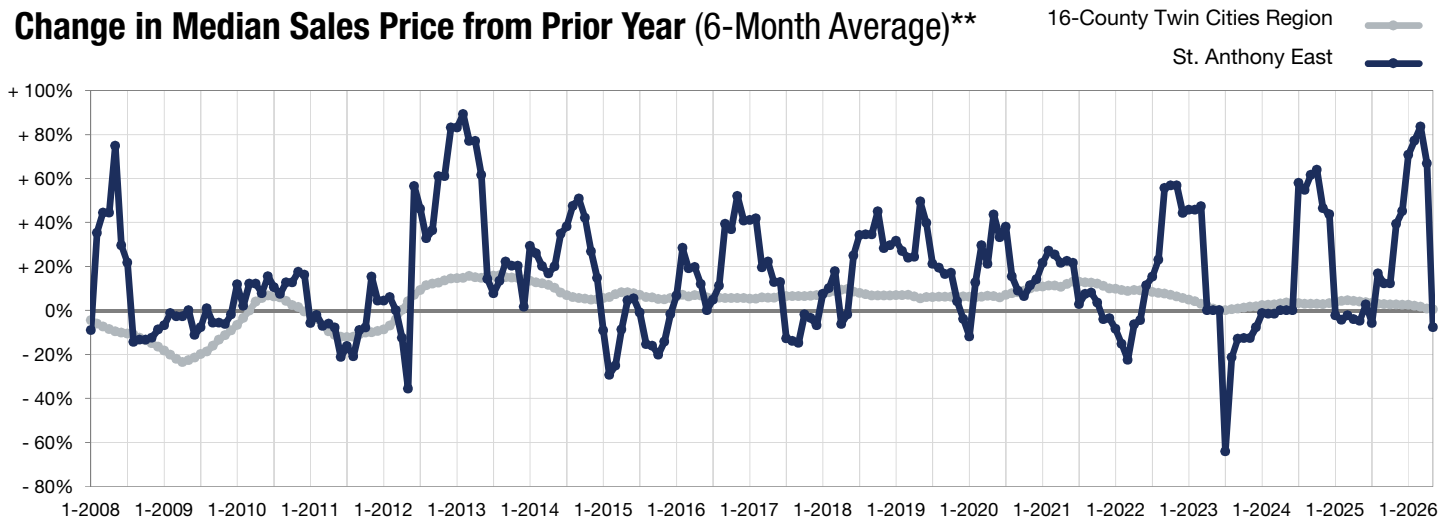
St. Anthony East

	May			Rolling 12 Months		
	2025	2026	+ / -	2025	2026	+ / -
New Listings	1	2	+ 100.0%	23	24	+ 4.3%
Closed Sales	1	2	+ 100.0%	22	15	-31.8%
Median Sales Price*	\$510,000	\$280,875	-44.9%	\$364,950	\$400,000	+ 9.6%
Average Sales Price*	\$510,000	\$280,875	-44.9%	\$345,181	\$381,633	+ 10.6%
Price Per Square Foot*	\$252	\$243	-3.6%	\$228	\$253	+ 11.0%
Percent of Original List Price Received*	103.0%	104.1%	+ 1.1%	98.9%	98.2%	-0.7%
Days on Market Until Sale	75	46	-38.7%	41	36	-12.2%
Inventory of Homes for Sale	3	4	+ 33.3%	--	--	--
Months Supply of Inventory	1.5	2.4	+ 60.0%	--	--	--

* Does not account for seller concessions. | Activity for one month can sometimes look extreme due to small sample size.



Change in Median Sales Price from Prior Year (6-Month Average)**



** Each dot represents the change in median sales price from the prior year using a 6-month weighted average. This means that each of the 6 months used in a dot are proportioned according to their share of sales during that period.