

Saint Paul – Summit Hill

- 33.3% **+ 112.5%** **- 41.9%**

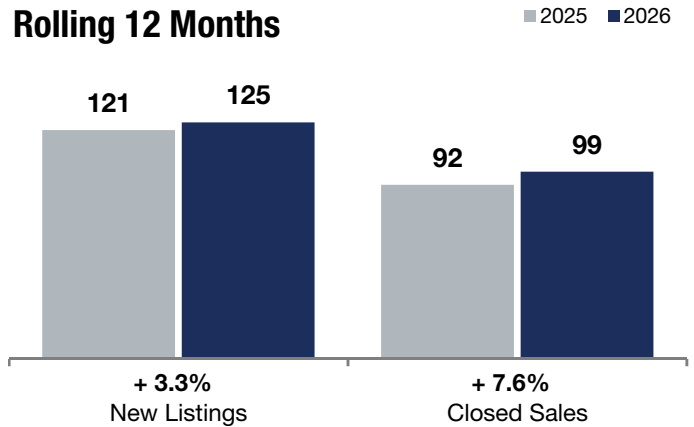
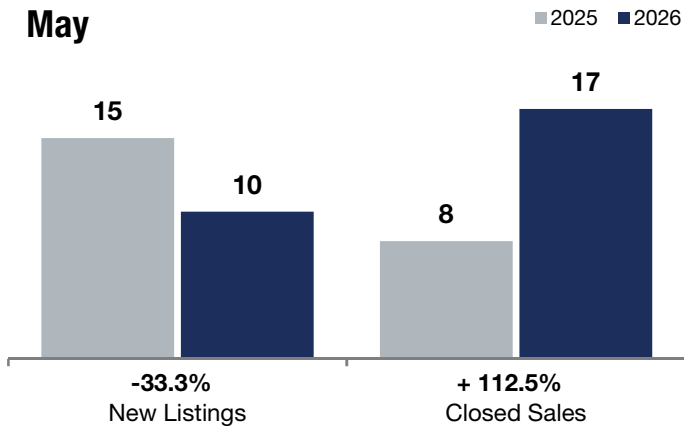
Change in
New Listings

Change in
Closed Sales

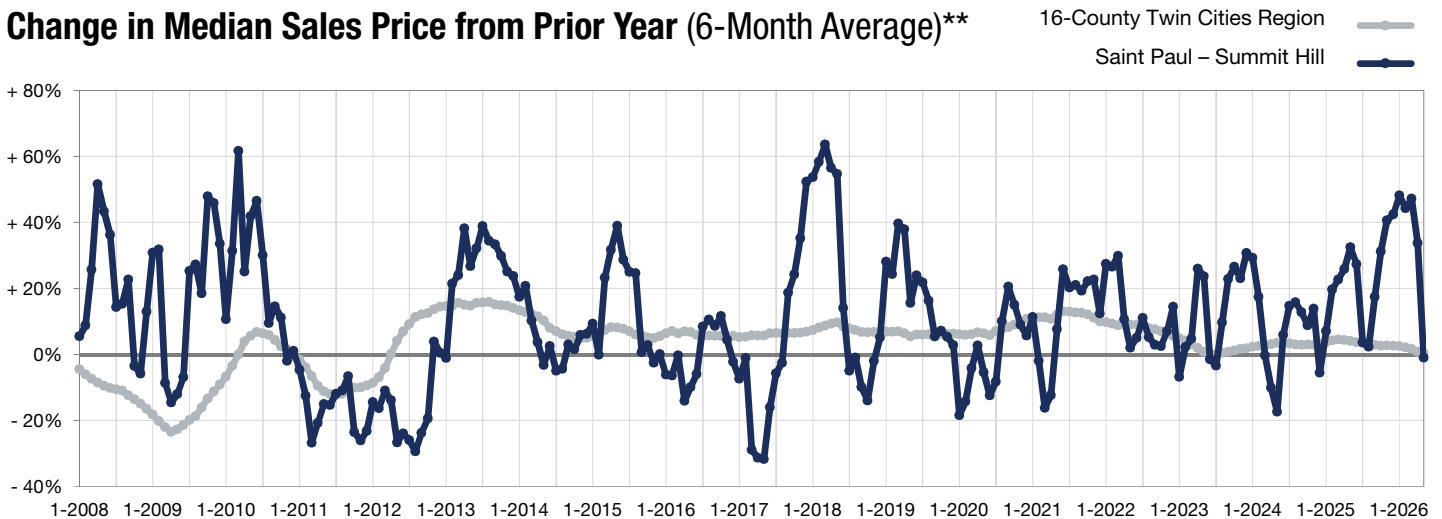
Change in
Median Sales Price

	May			Rolling 12 Months		
	2025	2026	+ / -	2025	2026	+ / -
New Listings	15	10	-33.3%	121	125	+ 3.3%
Closed Sales	8	17	+ 112.5%	92	99	+ 7.6%
Median Sales Price*	\$620,000	\$360,000	-41.9%	\$567,500	\$690,000	+ 21.6%
Average Sales Price*	\$725,000	\$508,966	-29.8%	\$648,807	\$683,942	+ 5.4%
Price Per Square Foot*	\$272	\$270	-0.6%	\$246	\$260	+ 5.7%
Percent of Original List Price Received*	100.4%	100.4%	0.0%	96.5%	97.4%	+ 0.9%
Days on Market Until Sale	79	44	-44.3%	77	58	-24.7%
Inventory of Homes for Sale	26	16	-38.5%	--	--	--
Months Supply of Inventory	3.3	2.0	-39.4%	--	--	--

* Does not account for seller concessions. | Activity for one month can sometimes look extreme due to small sample size.



Change in Median Sales Price from Prior Year (6-Month Average)**



** Each dot represents the change in median sales price from the prior year using a 6-month weighted average. This means that each of the 6 months used in a dot are proportioned according to their share of sales during that period.