

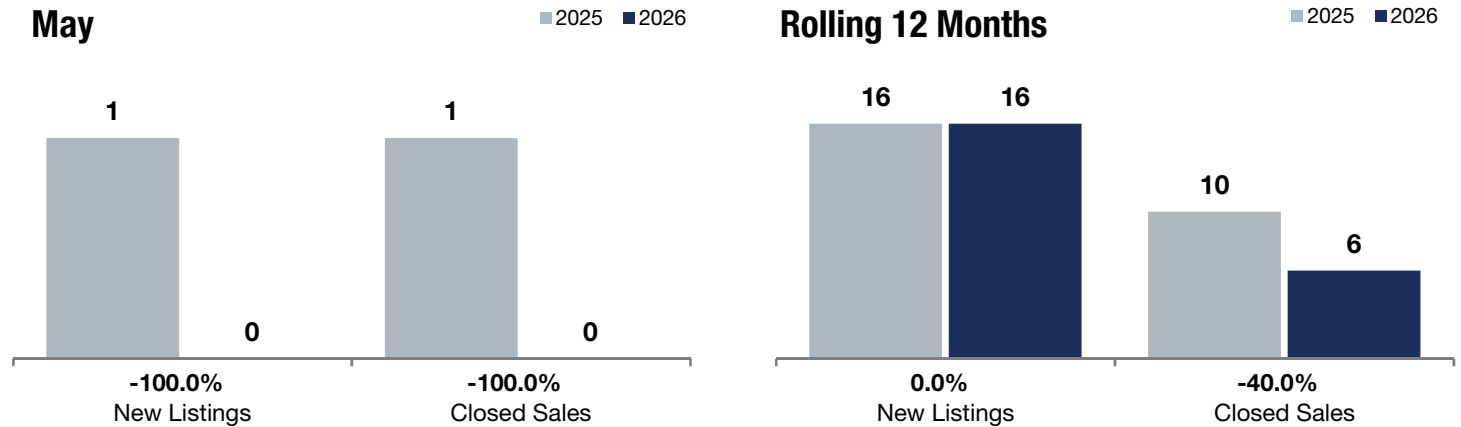
- 100.0% **- 100.0%** **- 100.0%**

Change in New Listings Change in Closed Sales Change in Median Sales Price

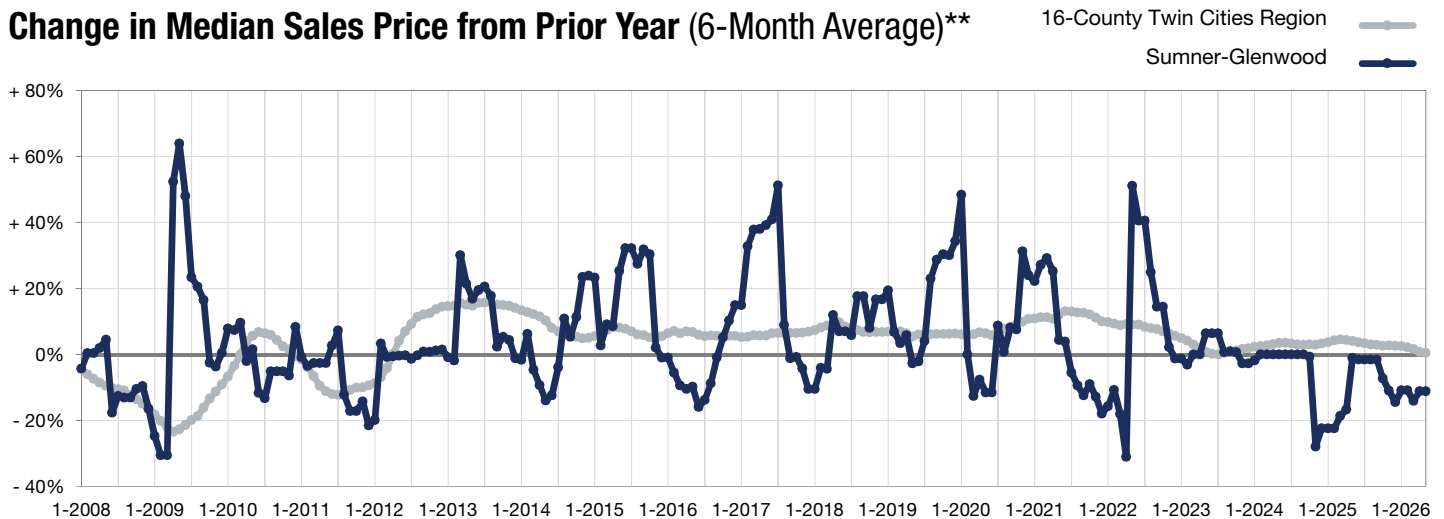
Sumner-Glenwood

	May			Rolling 12 Months		
	2025	2026	+ / -	2025	2026	+ / -
New Listings	1	0	-100.0%	16	16	0.0%
Closed Sales	1	0	-100.0%	10	6	-40.0%
Median Sales Price*	\$337,500	\$0	-100.0%	\$347,500	\$305,750	-12.0%
Average Sales Price*	\$337,500	\$0	-100.0%	\$334,390	\$303,917	-9.1%
Price Per Square Foot*	\$224	\$0	-100.0%	\$257	\$229	-10.8%
Percent of Original List Price Received*	100.0%	0.0%	-100.0%	98.0%	95.2%	-2.9%
Days on Market Until Sale	44	0	-100.0%	163	92	-43.6%
Inventory of Homes for Sale	1	4	+ 300.0%	--	--	--
Months Supply of Inventory	0.7	4.0	+ 471.4%	--	--	--

* Does not account for seller concessions. | Activity for one month can sometimes look extreme due to small sample size.



Change in Median Sales Price from Prior Year (6-Month Average)**



** Each dot represents the change in median sales price from the prior year using a 6-month weighted average. This means that each of the 6 months used in a dot are proportioned according to their share of sales during that period.