

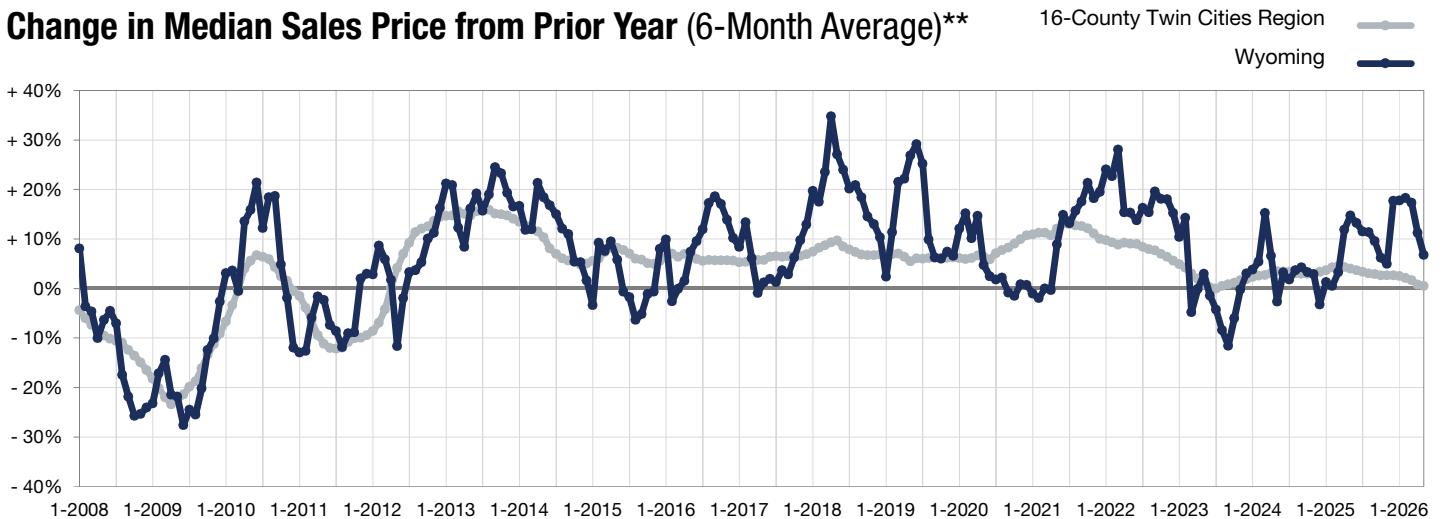
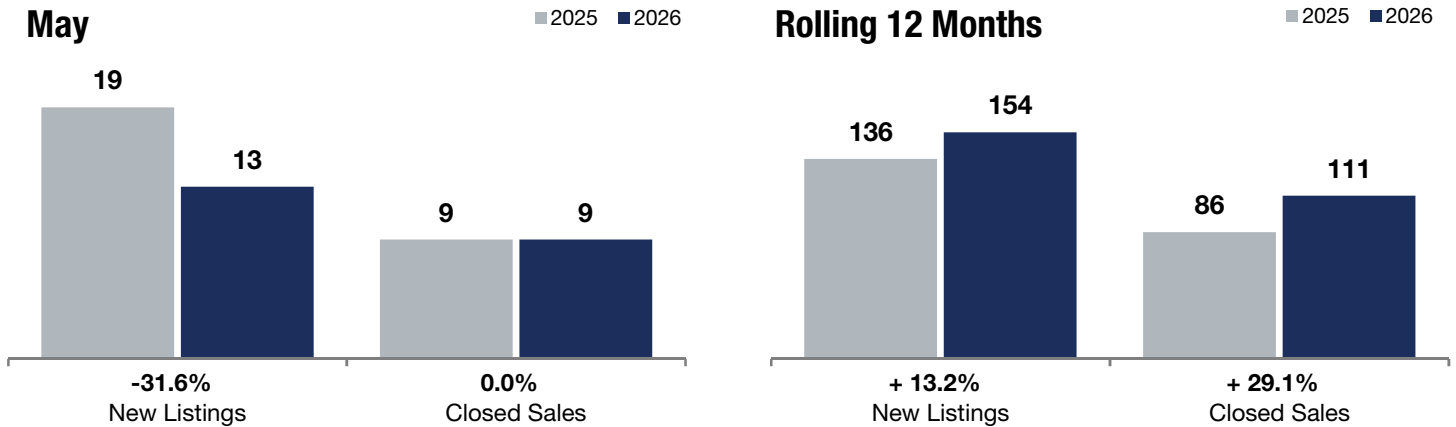
**- 31.6%**                      **0.0%**                      **- 17.9%**

Change in New Listings                      Change in Closed Sales                      Change in Median Sales Price

# Wyoming

	May			Rolling 12 Months		
	2025	2026	+ / -	2025	2026	+ / -
New Listings	19	13	-31.6%	136	154	+ 13.2%
Closed Sales	9	9	0.0%	86	111	+ 29.1%
Median Sales Price*	\$475,000	<b>\$390,000</b>	-17.9%	\$428,650	<b>\$431,375</b>	+ 0.6%
Average Sales Price*	\$523,224	<b>\$537,879</b>	+ 2.8%	\$451,045	<b>\$486,816</b>	+ 7.9%
Price Per Square Foot*	\$254	<b>\$239</b>	-6.0%	\$227	<b>\$222</b>	-2.1%
Percent of Original List Price Received*	103.2%	<b>100.2%</b>	-2.9%	99.2%	<b>99.1%</b>	-0.1%
Days on Market Until Sale	23	<b>43</b>	+ 87.0%	66	<b>56</b>	-15.2%
Inventory of Homes for Sale	31	<b>25</b>	-19.4%	--	--	--
Months Supply of Inventory	4.2	<b>2.6</b>	-38.1%	--	--	--

\* Does not account for seller concessions. | Activity for one month can sometimes look extreme due to small sample size.



\*\* Each dot represents the change in median sales price from the prior year using a 6-month weighted average. This means that each of the 6 months used in a dot are proportioned according to their share of sales during that period.